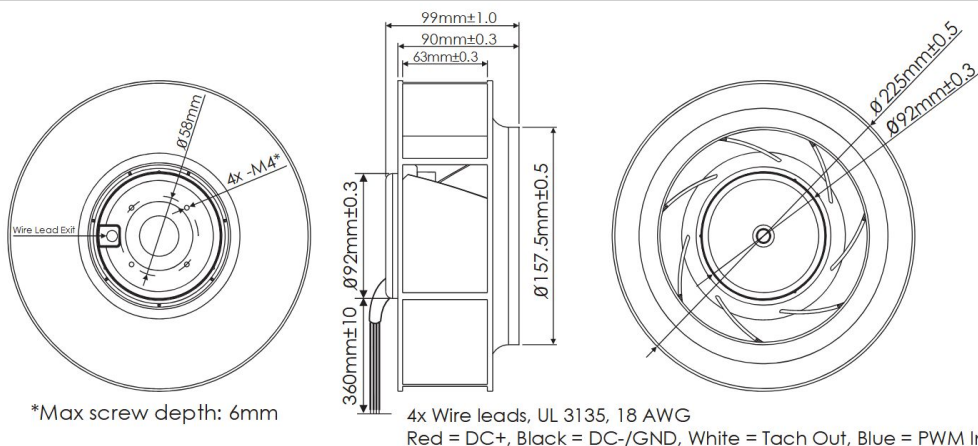
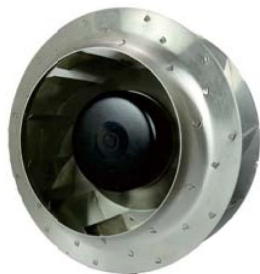


ODB22599

Corrosion Resistant Series

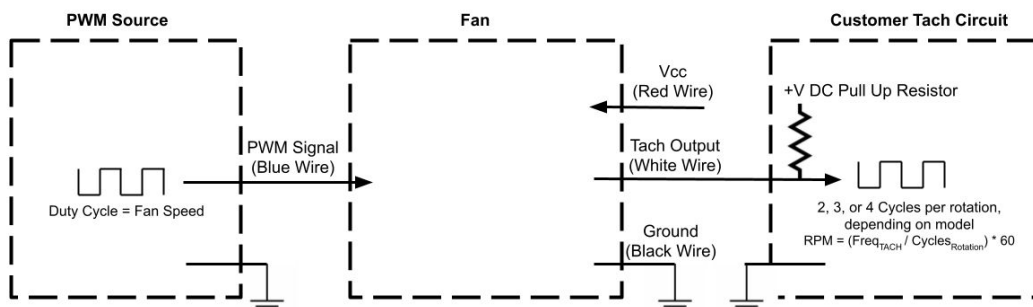


DC Motorized Impellers - 24, 48V
225mm x 99mm (8.85" x 3.90")



Motor Frame	Die Cast Aluminum, Black Coating	<u>Operating Temperature</u> -10°C ~ +60°C	<p>STATIC PRESSURE ("H₂O)</p> <p>AIR FLOW (CFM)</p>
Impeller	314 Stainless Steel	<u>Storage Temperature</u> -40°C ~ +75°C	
Connection	4x Lead Wires, 18 AWG	<u>Life Expectancy</u> 50,000 Hours (L10 at 25°C)	
Motor	Brushless DC, Electronically Protected, Polarity Protected, Auto Cutoff, Auto Restart, IP67	<u>Installed Options</u> IP67 Rated Motor 314 SS Balancing Clips UL 3135 Type Silicone-Insulated Wire Leads Silicone Wire Boot	
Bearing System	Ball Bearings	Weight: 3.31 lbs.	
Dielectric Strength	500VDC/min, <1mA		
Insulation Resistance	≥10MΩ @ 500V DC		

Part Number	Rated Voltage (Volts DC)	Voltage Range (Volts DC)	Rated Power (Watts)	Rated Current (Amps)	Rated Speed (RPM)	Max Airflow (CFM)	Noise Level (dBA)	Max Static Pressure ("H ₂ O)
ODB22599-24HB10A67CR	24	20 ~ 26.4	111	4.6	2500	835	67.4	2.05
ODB22599-48HB10A67CR	48	20 ~ 26.4	111	2.3	2500	835	67.4	2.05



Tach Max Pullup Voltage: Vcc of Fan
Tach Max Current: 5mA
Tach Cycles per Rotation: 3
PWM Max Input Voltage: ≤10V
PWM Max Sink Current: 8mA
PWM Frequency Range: 1KHz-100KHz
PWM Typical Frequency: 25KHz
RPM at 0% Duty Cycle: 0 RPM
RPM will be full speed if PWM input is disconnected.